

SPP Bare Steel Large Volume Solar Tanks



- Larger selection – ranging from 193gl to 6,000+ gl
- Double Glass Lining Available
- Top-Coat Insulation Available
- Designed for High Temperature (180F) Storage
- ASME Certified

The SPP bare steel large volume solar water tanks are designed for large commercial, industrial, high temperature or long term storage of hot water.

These large solar tanks are perfect for solar DHW, space heating, and solar air conditioning applications.



5-Year Limited Warranties / 10-Year Limited Warranties on Double Glass Lined Tanks

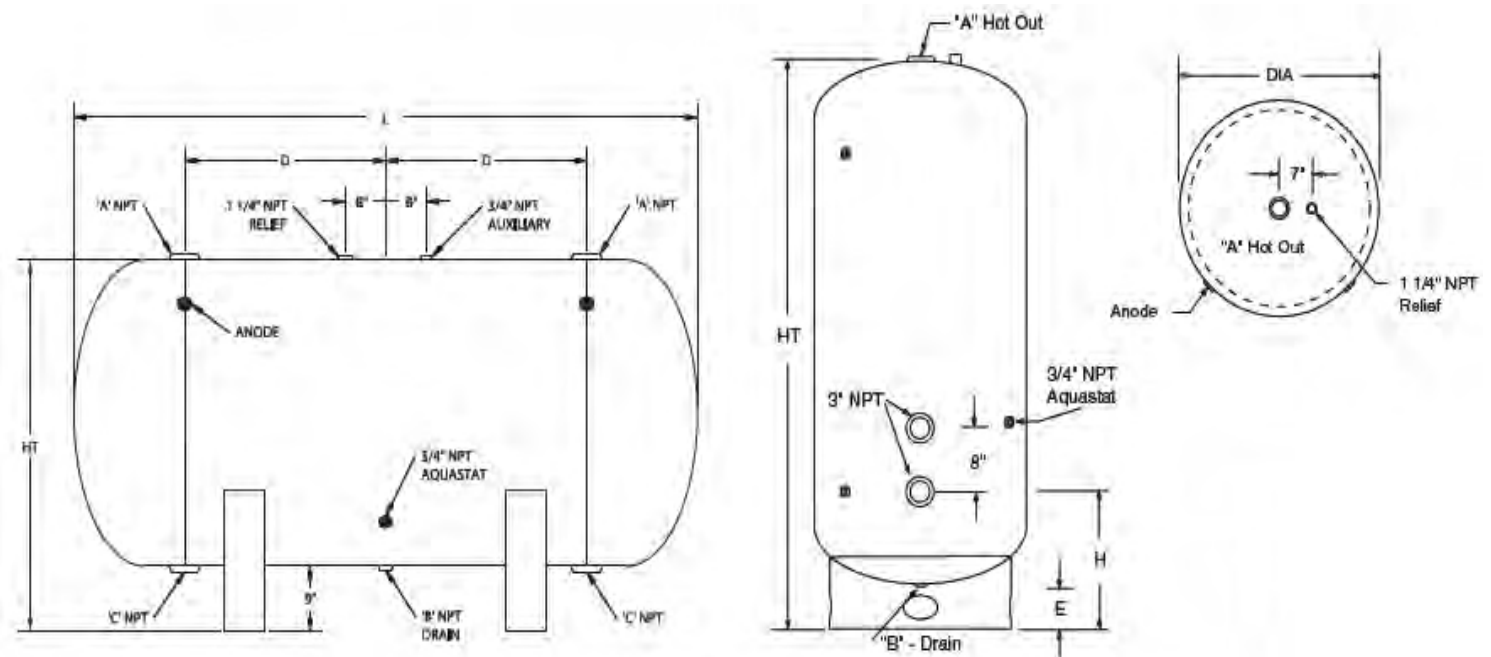
- ASME Rated - All size tanks are constructed and certified in accordance with ASME IV for 125 PSI.
- Red Oxide Primer - All tanks come with red oxide primer applied for long lasting durability.
- Top Coat & Finish Coat Available - Optional top coat insulation provides an R-16 insulation value. Finish coats are also available for all size tanks.
- High Quality Lining - Tanks are equipped with a single layer glass lining that is specifically formulated for hot water applications, designed to minimize the effects of high-temperature hot water.
- Double Glass Lining Option - Double glass lining option gives tanks added protection against failure, and extends the warranty from 5 years to 10 years. Built upon request.
- Warrantied - 5 year warranty protection against tank failure resulting from defects in materials and workmanship, 10 year warranty on tanks with double glass lining.

SPP Bare Steel Large Volume Solar Tanks: Specifications

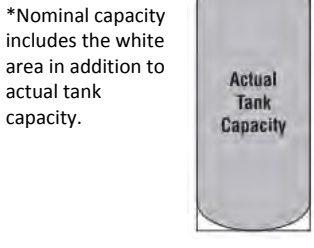
Meet or exceed ASHRAE 90.1b (current standard)

A	B	C	D	E	F	G	H	I	J	K	L	M	N
SPP-S30-063	193	175	67"	39"	63"	18"	4"	17.5"	30"	2.5"	1"	3"	340
SPP-S30-075	229	210	79	39	75	24	4	17.5	30	2.5	1	3	387
SPP-S30-085	260	240	89	39	85	29	4	17.5	30	2.5	1	3	520
SPP-S30-099	303	280	103	39	99	36	4	17.5	30	2.5	1	3	483
SPP-S30-111	340	320	115	39	111	42	4	17.5	30	2.5	1	3	530
SPP-S36-072	318	285	76	45	72	21	4	19	36	2.5	1	3	550
SPP-S36-078	344	310	82	45	78	24	4	19	36	2.5	1	3	588
SPP-S36-085	375	340	89	45	85	27.5	4	19	36	2.5	1	3	633
SPP-S36-090	397	360	94	45	90	30	4	19	36	2.5	1	3	664
SPP-S36-102	449	415	106	45	102	36	4	19	36	2.5	1	3	742
SPP-S36-114	502	465	118	45	114	42	4	19	36	2.5	1	3	818
SPP-S36-126	555	515	130	45	126	48	4	19	36	2.5	1	3	895
SPP-S42-081	486	435	85	51	81	24	4	20.5	42	3	1	3	783
SPP-S42-084	504	453	88	51	84	25.5	4	20.5	42	3	1	3	805
SPP-S42-093	558	505	97	51	93	30	4	20.5	42	3	1	3	874
SPP-S42-105	630	575	109	51	105	36	4	20.5	42	3	1	3	963
SPP-S42-117	702	645	121	51	117	42	4	20.5	42	3	1	3	1052
SPP-S42-129	774	720	133	51	129	48	4	20.5	42	3	1	3	1140
SPP-S42-139	846	790	143	51	139	53	4	20.5	42	3	1	3	1217
SPP-S48-073	572	500	77	57	73	18.5	4	22	48	3	1	3	1038
SPP-S48-084	658	580	88	57	84	24	4	22	48	3	1	3	1161
SPP-S48-096	752	675	100	57	96	30	4	22	48	3	1	3	1298
SPP-S48-108	846	765	112	57	108	36	4	22	48	3	1	3	1433
SPP-S48-120	940	840	124	57	120	42	4	22	48	3	1	3	1567
SPP-S48-141	1128	1040	145	57	141	52.5	4	22	48	3	1	3	1805
SPP-S54-099	981	875	105	63	99	37.5	6	25.5	54	3	1.5	3	1596
SPP-S54-123	1219	1110	129	63	123	49.5	6	25.5	54	3	1.5	3	1889
SPP-S54-147	1457	1340	153	63	147	61.5	6	25.5	54	3	1.5	3	2182
SPP-S54-183	1814	1690	189	63	183	79.5	6	25.5	54	3	1.5	3	2622
SPP-S60-114	1395	1245	120	69	114	45	6	27	60	3	1.5	3	2299
SPP-S60-138	1689	1530	144	69	138	57	6	27	60	3	1.5	3	2704
SPP-S60-168	1983	1820	168	69	168	69	6	27	60	3	1.5	3	3110
SPP-S60-186	2276	2105	192	69	186	81	6	27	60	3	1.5	3	3516
SPP-S60-210	2570	2395	216	69	210	93	6	27	60	3	1.5	3	3922
SPP-S72-120	2115	1865	126	81	120	48	6	30	72	3	1.5	3	2876
SPP-S72-144	2538	2285	150	81	144	60	6	30	72	3	1.5	3	3363
SPP-S72-168	2961	2700	174	81	168	72	6	30	72	3	1.5	3	3851
SPP-S72-192	3384	3115	198	81	192	84	6	30	72	3	1.5	3	4338
SPP-S72-216	3807	3530	222	81	216	94.5	6	30	72	3	1.5	3	4825
SPP-S72-250	4406	4120	256	81	250	113	6	30	72	3	1.5	3	5516
SPP-S84-138	3310	2915	144	93	138	57	6	33	84	3	1.5	3	4647
SPP-S84-160	3886	3480	168	93	162	69	6	33	84	3	1.5	3	5328
SPP-S84-186	4462	4045	192	93	186	81	6	33	84	3	1.5	3	6009
SPP-S84-210	5038	4610	216	93	210	93	6	33	84	3	1.5	3	6689
SPP-S84-256	6141	5695	262	93	256	116	6	33	84	3	1.5	3	7994

- A – Tank Part Number
- B – Nominal Gallon Capacity*
- C – Actual Capacity*
- D – Vertical Height
- E – Horizontal Height
- F – “L”
- G – “D”
- H – Base Clearance “E”
- I – “H”
- J – Diameter
- K – Tapping “A”
- L – Tapping “B”
- M – Tapping “C”
- N – Weight



*Nominal gallon capacity is listed for comparison purposes. Nominal gallon capacity refers to a hypothetical measurement in a case where overall tank length remains the same but instead of an elliptical head and base, the gallons are calculated as if it was built with flat heads and base. – See diagram



*Nominal capacity includes the white area in addition to actual tank capacity.

W-H-196 Test = 7.0 - 8.0 mg/in ² The W-H-196 Test is required for water heaters sold to the U.S. Government. The test consists of exposing the enamel to a boiling (212 F) 4/10% solution of Sodium Bicarbonate for eight (8), eighteen (18) hour cycles. Maximum weight loss after eight cycles is not to exceed 15 mg/in ² .	PEI T-21 Spot Acid Test = Class A PEI T-21 Spot Acid Test is used to determine enamel resistance to acids. The test area is examined for visible effects on the enamel and is graded from Class AA (no sign of etching) to Class D (etched surface).
Impact resistance = Class 4 to 5 The Impact Resistance Test is used to determine the adhesive qualities of enamel to the substrate. The enamel is graded from Class 1 (worst) to Class 5 (best), fractured glass adhering solidly to the impact area. Class 3 is acceptable.	Hi-Pot Test Less than 20 The HYPO Test is a measurement of the continuity of the glass coating (Spark Test). Fifty (50) breakthroughs or fewer are the usual specification for HWT's.

All water heaters are certified at 300 PSI test pressure (2068 kPa) and 150 PSI working pressure (1034 kPa). All potable water and electrical connections are 3/4" NPT (19mm) on 8" (203mm) centers. All models are UL listed.

Dimensions and specifications subject to change without notice in accordance with our policy of continuous product improvement.

Suitable for Water (Potable) Heating and Space Heating.